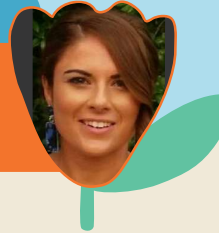


St James Playgroup Kotara South

Playgroup suburb
Kotara South

Volunteer Name
Karina



Venue type

- Community Centre
- Church
- Park
- School
- Preschool
- Other

How many playgroups do you run each week? 1 per week.

Average attendance
Adults: 12 **Children:** 28

How many years has your playgroup been operating?
8 years.

How many years have you been leading your playgroup?
3 years.

How do you advertise your playgroup? Through the school channels, Facebook, school website, Playgroup NSW Website.

What makes a good playgroup thrive? Sense of community. The fact we are linked to the school is very beneficial for us. Each year we get a group of kids that come together, play and then transition to Kindergarten together. This also goes for the parents. They get to start the school journey early and create that sense of community. It really is beautiful to see and is why our playgroup has operated for so long and for so well.

What creative and fun activities do you do at your playgroup? We have an array of toys that we rotate each week. We set up about 10 toy stations which rotate (baby toys, dolls, barbies, Lego, tool bench, play kitchen, soft play, duplo, animals, cars, actions figures etc.) We also do a craft table and then have a sensory table that have rotating activities. We try to stick to themes that relate to what is happening in the year – for example, Valentines Day, Easter, Mother's Day, Xmas etc.

Do you have any templates or resources that you have created? If yes, please share. We are lucky in that the school shares lots of resources with us, as well as one of our volunteers being a teacher. Unable to share, but there are lots of free colouring in templates, sensory play ideas online.

Do you do any fundraising for your playgroup? Can you share any tips? Not generally. We may do a morning tea in which identify that the entry fee will be donated.

People when then contribute more on those days. For example we did a Biggest Morning Tea last year and the entry fee was donated. Most people contributed \$10 each and we had a total of \$180 to donate. Otherwise the \$2 per family per week covers our general costs. The school tops us up when needed and we do not have any outgoing costs as the school does not charge us rent.

Do you have any tips for engaging with volunteers? Unfortunately not and it is a hurdle we have ourselves. We are lucky we have the support of school but we are also limited when getting people to volunteer.

Please share with us the impact of playgroups (on children, parents, communities and you): Huge impact. It is a community and is the start to the broader school community for some many families. Fro example my child would attend Kindergarten next year 2027 knowing no one if we didn't join playgroup. Now he has 10 or more friends that he has made at Playgroup, that will not only be familiar faces but will be his friends. Similar for me, I now have a strong Mum village that I wouldn't have if I didn't have playgroup.

Describe your playgroup in 3 words? Committed school community.

MAP NSW

